

Top Global University Project (Type A) Nagoya University - Asian Hub University building a sustainable world in the 21st century -

Results of efforts

1

Nagoya University: the next 10-20 years
(vision when the plan was established)

World-Class Research University Hub University in High-Growth Asia

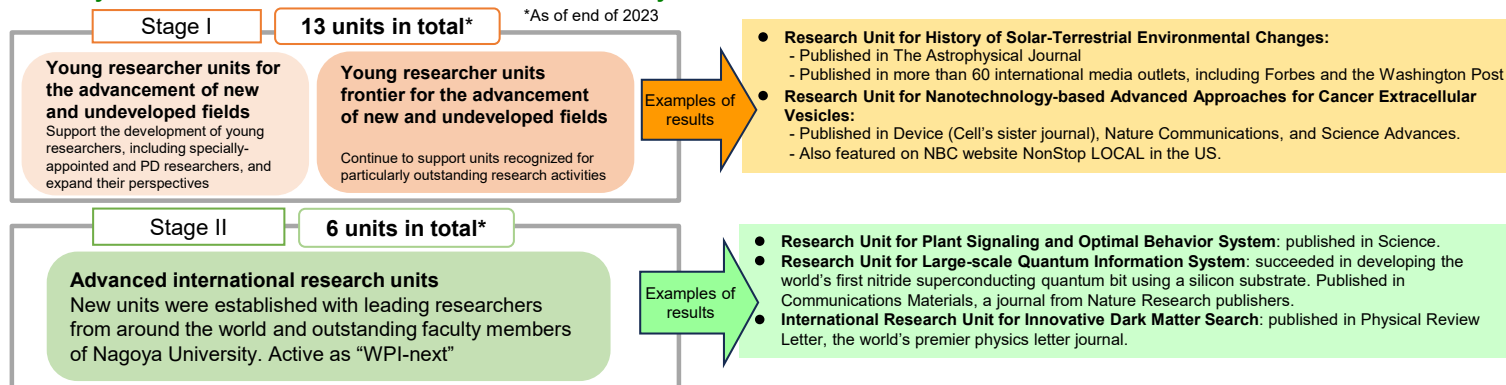


2

Become one of the world's leading research universities

Foster the next generation of research centers and improve research capabilities through support for young researchers, female researchers, and international researchers

☆ Multi-Layered Structure for the Research Center Formation System



☆ Nagoya University Young Leaders Cultivation (YLC) Program

- We have employed outstanding young researchers who have just completed their doctoral degrees as specially appointed faculty members (YLC faculty) for a term of five years.
- Young, female and international researchers have been recruited based on "University", "non-University" "international" and "women" quotas.
- Around eight researchers are employed each year, and 80 in total have been hired up to AY2023. More than half (47 researchers) were appointed to positions inside and outside the university as tenure holders before the end of their term. In addition, a tenure-track system has been established to encourage retention at the University.

☆ Number of international coauthored papers

AY2013: 1,382 papers (4,928 papers in total, 28.0%) → **AY2023: 1,802 papers** (5,374 papers in total, 33.5%)

☆ Number of press releases in English (EurekAlert!)

AY2013: 0 press releases → **AY2023 65 press releases**

Strategy 2 Developing Joint Degree programs with Top Overseas Universities

Develop global standard education

Expand joint degree programs (2013: 0 courses → 2023: 7 universities, 7 majors, 17 courses)

- The first international joint major in Japan was established in October 2015. Currently, international joint majors at Nagoya University account for **23%** of the total number of international joint majors in Japan (7 out of 30 majors) (Tokai National Higher Education and Research System accounts for **36%** of the national total: 11 out of 30 majors)
- Make full-scale efforts to strengthen research and education collaboration with top universities at the major level, and guarantee international quality of doctoral degrees through joint degree screening
- Joint curriculum (employment of full-time faculty members) → conduct research at the partner university for at least one year (mutual assignment of supervising faculty members and deputy supervising faculty members)
Some participants have gone on to work at world-renowned laboratories.



<Masato Yoshihara (right) received the first doctoral degree from the Joint Degree Program (JDP) in Japan>

The University of Adelaide (Australia)
University ranking: 89th
Medicine: 131
Course established: October 2015

The University of Edinburgh (UK)
University ranking: 22
Physics: 44
Chemistry: 60
Life sciences: 21
Course established: October 2016

Lund University (Sweden)
University ranking: 85
Medicine: 89
Course established: April 2017



Nagoya University
University ranking: 176
Medicine: 201-250, **Chemistry:** 101
Physics: 68, **Life sciences:** 151-200
Agriculture: 151-200
Engineering: 160



NAGAYA UNIVERSITY



The University of Western Australia (Australia)
University ranking: 72
Agriculture: 46
Course established: April 2019

University of Freiburg (Germany)
University ranking: 192
Medicine: 46
Course established: October 2018

Kasetsart University (Thailand)
Agriculture: 62
Course established: April 2018

Chulalongkorn University (Thailand)
University ranking: 211
Engineering: 222
Course established: April 2022

G30 Program

Develop internationally competitive educational programs

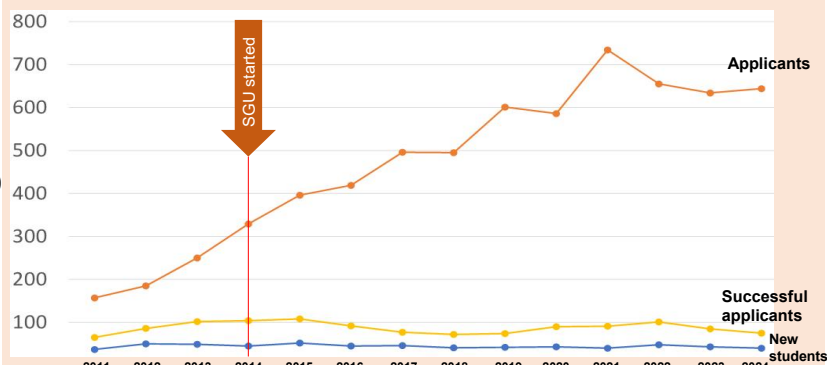
☆ Outline and current status

- **Autumn enrollment** courses for degrees taught in **English only**.
- 6 undergraduate, 11 master's degree, 7 doctoral degree programs
- **A wide range of humanities and science courses are available**
- **The number of applicants for the undergraduate program is about 600-700 applicants/year, and the number of admitted students is about 50. The number of applicants is more than 10 times the admission capacity** (the strict quota system for the entire faculty makes it difficult to increase the number of students).
- **In the first year, students are required to take Japanese language classes.** Students who wish can continue to take Japanese language classes from the second year, and we support them in strengthening their Japanese language skills according to their needs and goals, such as finding a job in Japan (e.g. Business Japanese class).
- **G30 classes are open to Japanese students** (NU-EMI courses) and are co-taught alongside Japanese students (about 200 Japanese students attend each year).

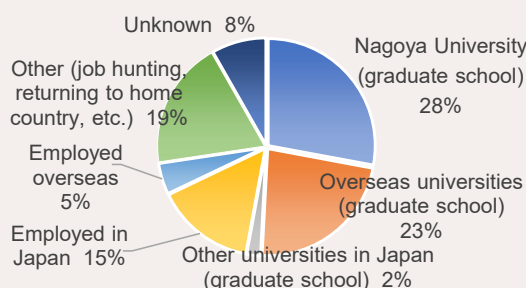
☆ Results

- **1/4 of undergraduates go on to graduate school at top global universities, and 30% of undergraduates go on to graduate school at Nagoya University**
- **Cumulative enrollment: 581 undergraduates, and 722 graduate students**

G30 undergraduate program applications (2011-2024)



G30 Undergraduate Program Graduate Pathways (2015-2022)



Examples of overseas graduate schools students have gone on to study at

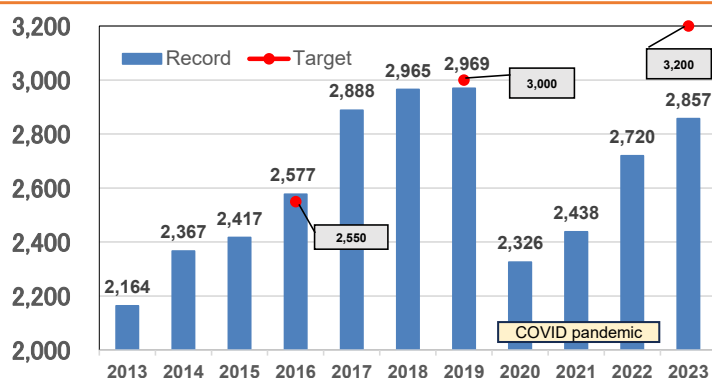
Oxford, MIT, ETH, UC Berkeley, Michigan, Toronto, Melbourne, Amsterdam, Imperial College London, Chicago, Pennsylvania, Duke, Carnegie Mellon, London School of Economics and Political Science, etc.

5

A campus where diverse students gather from around the world to launch their future careers

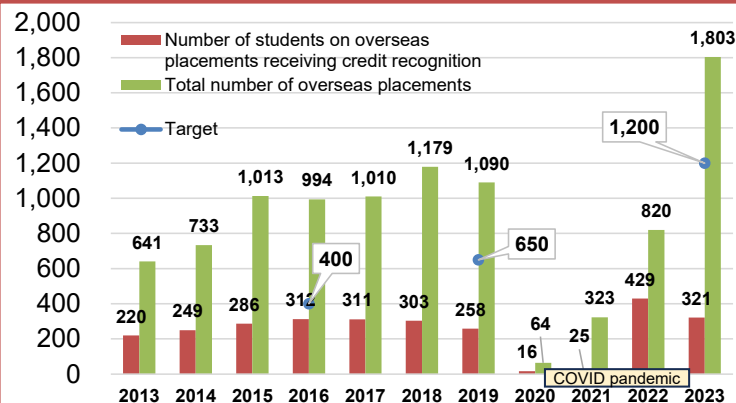
Attract talented foreign students and encourage Japanese students to study overseas

Number of international students accepted (2013-2023)



The number of incoming students is still recovering from the COVID pandemic

Number of overseas placements (2013-2023)



Stagnation in the number of students on overseas placements receiving credit recognition

*Includes the following online study abroad programs from AY2020 onward
2020: 45
2021: 265
2022: 282
2023: 488

☆ Evaluate the current situation regarding stagnant growth in the number of students on overseas placements, and consider ways of improving the situation

<<Analyze current situation>>

- The number of students sent overseas is on the rise. There are problems with stagnating numbers of students on overseas placements receiving credit recognition.
- About 70% of students are interested in studying abroad and international exchange. However, the financial burden and other obstacles are high, making them hesitant (the total cost of even a short-term study abroad program of about one month exceeds 900,000 yen in Europe, the US, and other countries). The language aspect and time available to study abroad are also factors.

<<Investigations targeting improvements>>

- Develop low-cost **short-term overseas study programs with credit recognition**, and **increase travel expense support** in cooperation with companies, etc.
- Strengthen **approaches to information sessions, etc.** to encourage students who are reluctant to study abroad, and expand opportunities for **co-curricular activities with foreign students early on** after enrollment.
- In order to build mid- to long-term study abroad programs that do not require a year to be repeated, pursue systems for **recognizing credits earned** at study abroad destinations, flexible **curricula** at faculties/graduate courses, and **bold revisions of the academic calendar**.

6

Strategy 4 Expanding Academic Network in Asia

Become an Asian hub university

Expand Asian satellite campuses

☆ Produce leading professionals

- **Asian Satellite Campuses Institute (ASCI)**
 - Doctoral programs targeting careers in government, international organizations, and academia
 - Seven graduate schools are participating in the project, which is being developed in 12 countries (see figure on the right).
 - 45 students received doctoral degrees.
- **Research and Education Center for Japanese Law (CJL)**
 - Approximately 400 graduates in 6 countries.
 - Talented students have gone on to graduate school, and approximately 100 students have received a master's degree or higher.
- **Young Leaders' Program in Health Care Administration (YLP)**
 - Run for more than 20 years in 12 Asian countries.
 - Students completing the program can go on to acquire a doctoral degree at ASCI.

Cumulative number of leading professionals, such as ministers, deputy ministers, bureau chiefs, and other key leading professionals; **304**, which exceeds the target (280)

☆ Expanding from human resources development through to a new research center

- International Station for Tropical Agricultural Sciences established in 2019, with the Philippines as its main base.

Transnational Doctoral Programs for Leading Professionals in Asian Countries (Ph.D. program, started 2014)

	Education and human development	Law	Medicine	Engineering	Bioagricultural sciences	International development	Environmental studies
Vietnam		●					
Cambodia		●	●		●	●	
Mongolia	●	●	●				●
Laos		●	●		●		●
Uzbekistan	●	●	●				
Philippines				●	●	●	●
Myanmar			● *				
Afghanistan			● *				
Kyrgyzstan			● *				
Indonesia			● *				
Thailand			● *				
Malaysia			● *				

* Programs offered without satellite campuses

7

Self-propelled efforts

Business continuity measures

Business development after completion of the project period

Further business development and horizontal deployment of business results based on international strategy

In-house hiring of G30 program faculty members

Establish target for G30 faculty numbers to ensure staffing for project implementation

2020-2023
G30 faculty
members: 23



Switch to educational
programs at each
school and graduate
school

Increase own income to encourage self-propelled efforts

- Promote increased own income by acquiring funds/external funding
- Strengthen financial management platform



名古屋大学基金
NAGOYA UNIVERSITY FOUNDATION

Joint research and
donations with companies

Paid programs

Social impact
Creation support projects

National universities
Management reform
promotion projects

Horizontal deployment

2020 - Establishment of Tokai National Higher Education and Research System



<Examples of joint efforts with Gifu University>

- 2022 - Inauguration of the Interuniversity JDP Council of Japan
- Since AY2023 - Establishment of joint courses
Eight Gifu University students took part in a short-term training course at Nagoya University

2024 - Establishment of Tokai-Shinshu-National University Collaboration Platform (C²-FRONTS)

Nine universities representing eight national university corporations in the Tokai and Shinshu regions came together to make effective use of their resources. The Liaison Committee for Promoting International Cooperation was established as a field-specific task force to study collaborative initiatives.

8

Global Multi-Campus initiative

Four world-class universities selected as **strategic partner universities**
“**Global Multi-Campus**” established, where **full-time faculty and staff are stationed as a base for multicultural co-curricular learning and co-creation**

- **Strategic alliances** and **international networks** with universities that share common values
- Comprehensive **student-faculty exchange, research collaboration, and industry-academia cooperation**

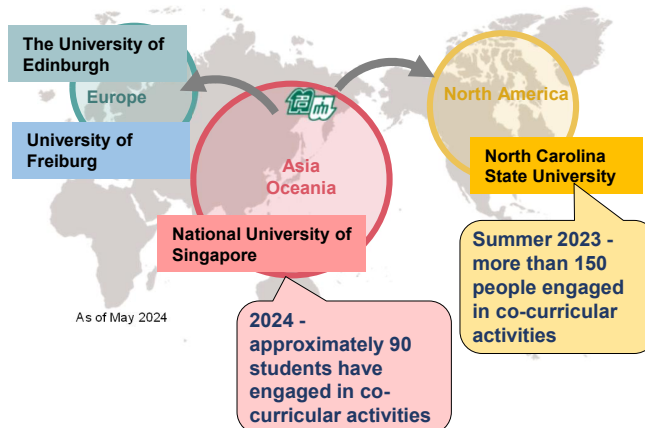
2022 - Establishment of Nagoya University Global Multi-Campus

Strategic partner universities

Leading overseas universities that **mutually** promote **interactive** education, research, and industry-academia collaboration activities (currently **4 universities**)

- **North Carolina State University (US) ***
- **National University of Singapore (Singapore)***
- **University of Freiburg (Germany)**
- **The University of Edinburgh (UK)**

*Global Campus established



Then-Prime Minister Kishida visited Nagoya University Global Campus at NC State University in April

